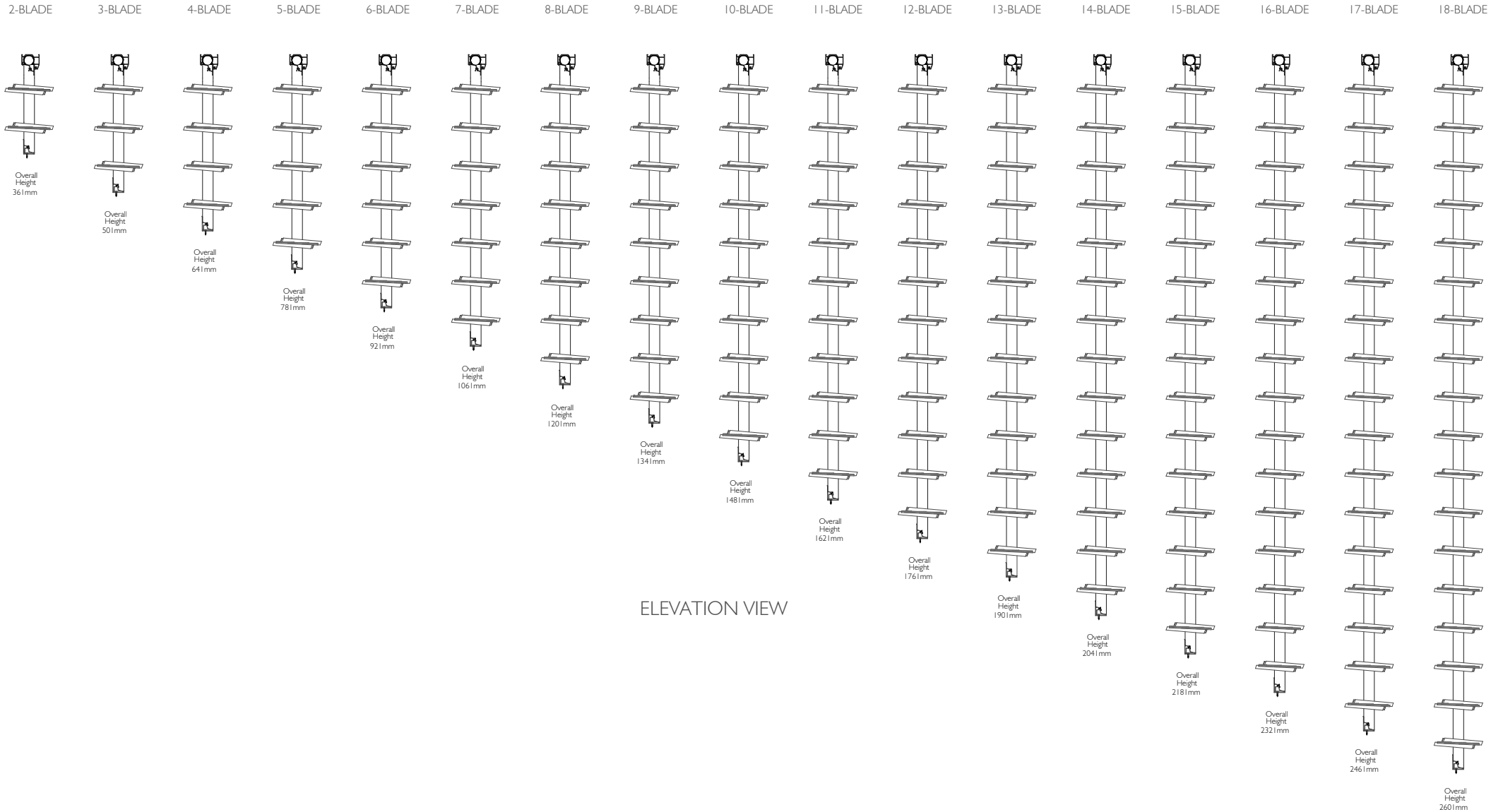


# ALTAIR MK2 152 POWERLOUVRE IN COMPONENT FORM

## Standard Heights



ELEVATION VIEW

Proprietary and confidential

Rev	Description	Approved By	Date
A	Added further information about clip version	A.E	17.3.16
B	Update component form power head and head weatherstrip insert profiles	D.F	30.1.19

Title:

Altair MK2 152 Powerlouvre  
in Component Form  
Standard Height

Drawn by: D.Oe Date: 03/08/2010 Scale: 1:20@A4

**breezway**

35 Cambridge Street, Coorparoo QLD 4151, ABN 24 081 897 823

Sheet 1 of 5

Revision B

Material:

Finish:

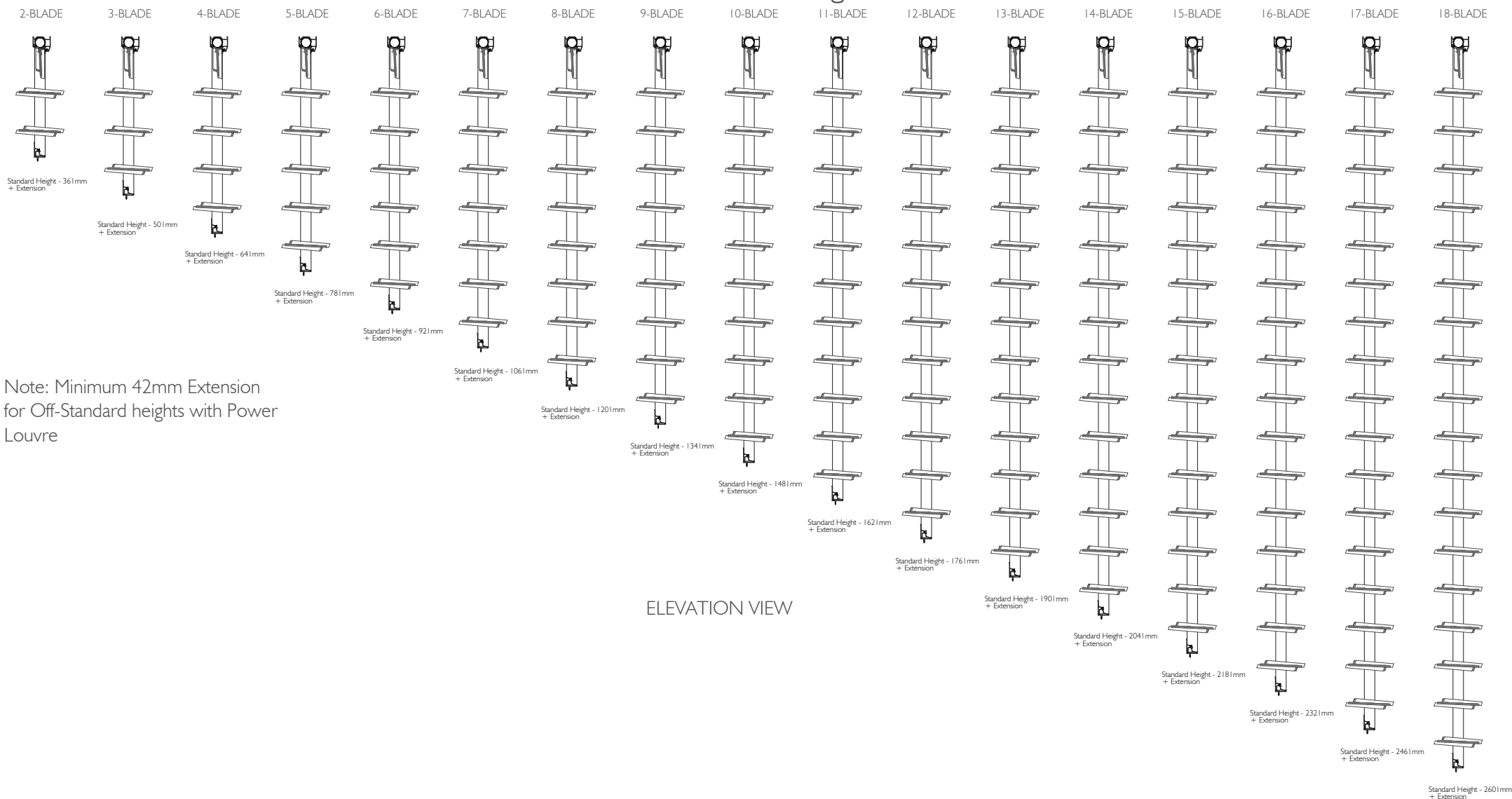
SAP Mat No:

Dwg No:

The information contained in this drawing is the sole property of Breezway Australia. Any reproduction in part or as a whole, without the written permission of Breezway Australia is prohibited.

# ALTAIR MK2 152 POWERLOUVRE IN COMPONENT FORM

## Off- Standard Heights



Note: Minimum 42mm Extension  
for Off-Standard heights with Power  
Louvre

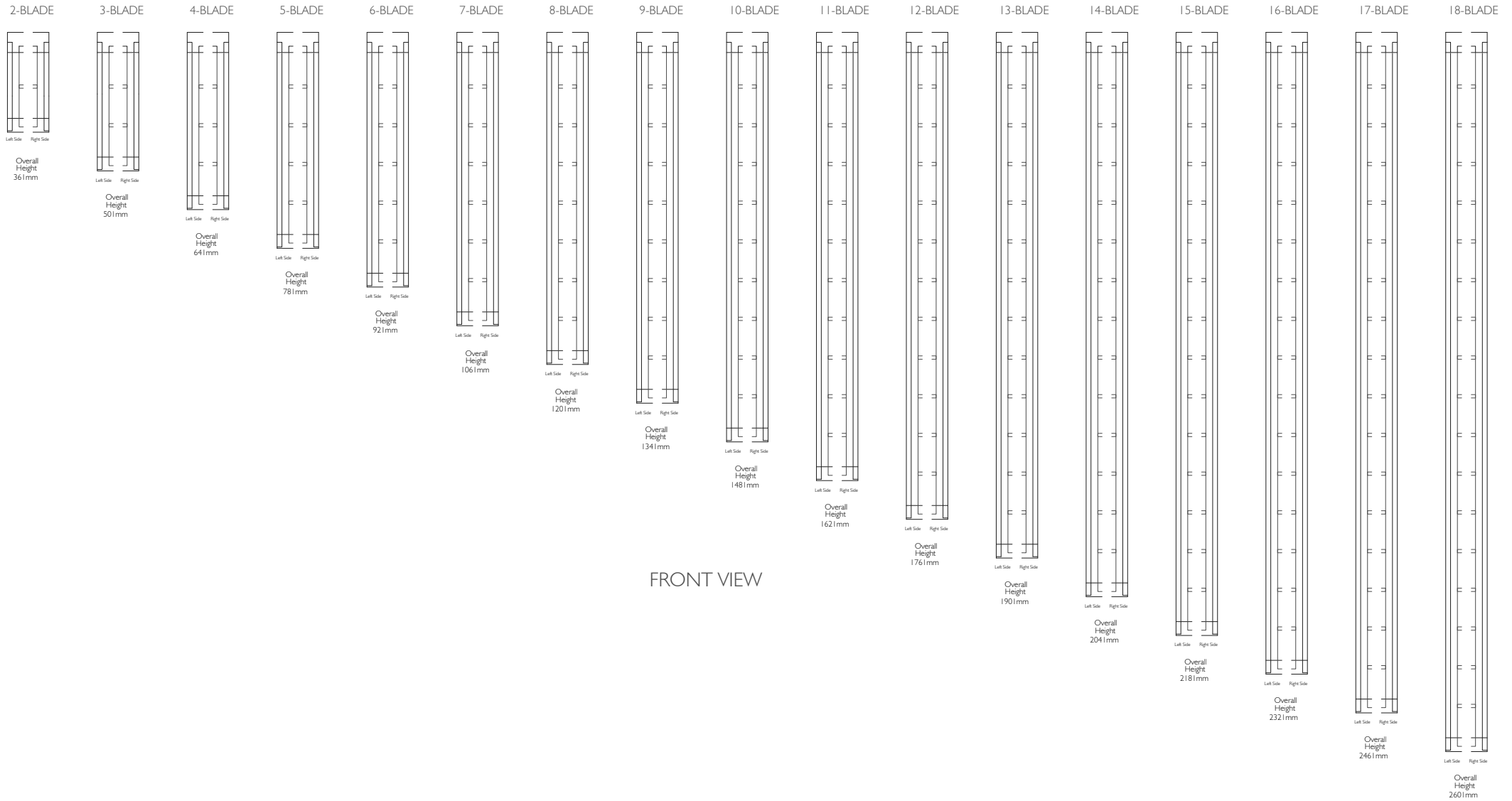
Proprietary and confidential The information contained in this drawing is the sole property of Breezway Australia. Any reproduction in part or as a whole, without the written permission of Breezway Australia is prohibited.	Rev	Description	Approved		Title: Altair MK2 152 Powerlouvre in Component Form Off-Standard Height  Drawn by: B.G    Date: 24/11/2010    Scale: 1:20@A4    Sheet 2 of 5	Material:	
	A	Added further information about clip version	By	Date		Finish:	
	B	Update component form power head and head weatherstrip insert profiles	A.E	17.3.16		SAP Mat No:	
			D.F	30.1.19		Dwg No:	
						Revision B	

**breezway**

35 Cambridge Street, Coorparoo QLD 4151, ABN 24 081 897 823

# ALTAIR MK2 152 POWERLOUVRE IN COMPONENT FORM

## Standard Heights



Proprietary and confidential

Rev	Description	Approved By	Date
A	Added further information about clip version	A.E	17.3.16
B	Update component form power head and head weatherstrip insert profiles	D.F	30.1.19

Title:  
Altair MK2 152 Powerlouvre  
in Component Form

**breezway**

35 Cambridge Street, Coorparoo QLD 4151, ABN 24 081 897 823

Drawn by: D.Oe Date: 03/08/2010 Scale: 1:20@A4 Sheet 3 of 5 Revision B

Material:

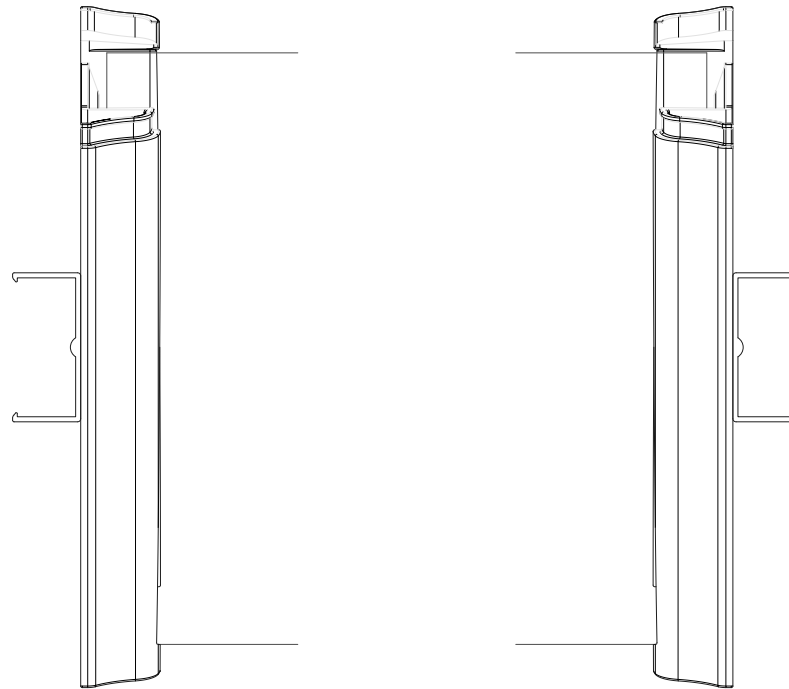
Finish:

SAP Mat No:

Dwg No:

The information contained in this drawing is the sole property of Breezway Australia. Any reproduction in part or as a whole, without the written permission of Breezway Australia is prohibited.

# Altair MK2 I52 Louvre



## PLAN VIEW

Proprietary and confidential

The information contained in this drawing is the sole property of Breezway Australia. Any reproduction in part or as a whole, without the written permission of Breezway Australia is prohibited.

Rev	Description	Approved	
		By	Date
A	Added further information about clip version	A.E	17.3.16
B	Update component form power head and head weatherstrip insert profiles	D.F	30.1.19

Title:

Altair MK2 I52 Powerlouvre  
in Component Form

Drawn by: D.Oe Date: 03/08/2010 Scale: 1:2

**breezway**

35 Cambridge Street, Coorparoo QLD 4151, ABN 24 081 897 823

Sheet 4 of 5

Revision B

Material:


Finish:

SAP Mat No:

Dwg No:

# Specification

The louvre window shall be Altair MK2 152mm Powerlouvre in component form installed with an (insert outer frame spec here) – as certified by the Australian Window Association. Fabricated to perform in (Insert applicable N or C rating) Zone to comply with AS2047.

Proprietary and confidential The information contained in this drawing is the sole property of Breezway Australia. Any reproduction in part or as a whole, without the written permission of Breezway Australia is prohibited.	Rev	Description	Approved		Title:  Altair MK2 152 Powerlouvre in Component Form	 35 Cambridge Street, Coorparoo QLD 4151, ABN 24 081 897 823	Material:	
	A	Added further information about clip version	A.E	17.3.16			Finish:	
	B	Update component form power head and head weatherstrip insert profiles	D.F	30.1.19			SAP Mat No:	
							Dwg No:	
Drawn by: D.Oe			Date: 03/08/2010		Scale:	Sheet 5 of 5	Revision B	